

PARSIFAL
YACHTING



VERA

Abeking & Rasmussen 52m





Specifications ■

Builder: Abeking & Rasmussen

Model: Custom

Hull: Steel

Superstructure: Aluminium

Hull Configuration: Full Displacement

Year: 1999

Refit Year: 2009

L.O.A: 52.00m / 170.70'

Beam: 10.30m / 33.10'

Max Draft: 3.6m / 11.6'

Gross Tonnage: 887 GT

Net Tonnage: 266 GT

Displacement: 776 metric tons

Water Capacity: 45.406 Lt

Exterior Designer: Espen – Oeino

Interior Designer: Luigi Sturchio & Ath. Kyratsou

Classification: Lloyd's

Flag: Greek

Engine: 2 X 1875 hp CAT 3516

Cruising Speed: 14 knots

Max Speed: 16 knots

Economical: 13 knots

Accommodation: 12 guests in 6 cabins

Location: Greece

Asking Price: P.O.A



Machinery ■

MAIN ENGINES
2 x 1875 hp CAT 3516

ENGINE HOURS
Port: 5,800 hours (March 2022)
Stbd: 5,800 hours (March 2022)
Major overhaul Done in 2009

GEAR BOXES
ZF BW 460 Family

SHAFTS & PROPELLERS
Otto Piening GmbH
Piening – Komm. – Nr 9707028/031
2 x Propellers 5 Bladed Out turning
Stainless steel water cooled shafts

SPEEDS
Maximum: 16 knots
Cruising: 14 knots
Economical: 13 knots

FUEL CONSUMPTIONS
Maximum: 400 litres/hour
Cruising: 300 litres/hour
Economical: 250 litres/hour

RANGE
Approx 5,500 nautical miles @ 13 knots



Tank Capacities ■

FUEL: 142,398 litres (37,473 US gallons)

WATER: 45,406 litres (11,948 US gallons)

LUB OIL: 4,000 litres (1056 US gallons)

DIRTY LUB OIL: 3,800 litres (1000 US gallons)

GREY WATER: 9,524 litres (2,506 US gallons)

BLACK WATER: 3,052 litres (803 US gallons)

Auxiliary Machinery & Electr. System ■

GENERATORS

2 x Caterpillar 160kW @ 1,500rpm each

20 liters/hour fuel consumption

1x Caterpillar 50KWDI-T Emergency Generator

GENERATOR HOURS

Gen PORT: 25,280 hours (March 2022)

Gen STBD: 25,044 hours (March 2022)

Emergency: 150 hours (March 2022)

Major overhaul done in 2021

SHORE POWER

3 phase, 400 / 230v AC /50 Hz

2 x ATLAS Power Converter

BATTERIES

6 x 12v 200 Ahr

4 x 12v 120 Ahr



Accommodation ■

Guests: 12
Total Cabins: 6
Crew: 13

Master Cabin with king size bed, PLASMA TV, his & hers bathroom with shower, Jacuzzi & sauna, his & hers walk in closets, mini bar, safe box and an office on the main deck.

Two VIP Cabins with king size bed & TV.
Three Guests cabins with double beds that can be separated to twin beds & TV.
All with en-suite facilities.

One gym room

Day WC on the main, upper & sundeck

All staterooms and salons are fitted with SMART TV LG 4K

Satellite TV
Wi-Fi internet connection on board
Sat com (phone/fax)

CREW:

Accommodation for up to 13 crew on the lower deck cabins and single Captain's cabin on the bridge deck



Auxiliary Equipment ■

STEERING SYSTEM

Rolls Royce/Tenfjord SR 562 x 2 Steering gear
2 x Foils Steel Rudders
Phontech Emergency Analog Comms
Bridge to ER

RUDDER ANGLE INDICATOR: Rolls Royce

BOW THRUSTER: Zoller 125 KW

STABILIZERS: Koopnautic

FUEL SEPERATOR: Alfa Laval – 1000 litres/hour

OIL/WATER SEPARATOR: DVZ 500 VC Oilmaster

FIRE/BILGE PUMP: 3 x Kleinguter- Aufzug Tra 400

WATERMAKERS:HEM 2 x 800 – 1000lt / hour(each)

SEWAGE TREATMENT: Microphor ITT Jabsco

WC's: Microflash

AIRCONDITIONING: BITZER VZL/VZ/Z 4x256000btu

VENTILATION: 2 x RCU.



Communication Equipment ■

SATCOM

Litton Marine Systems SAT-C transceiver

VSAT antenna for Voice and HSD

VHF RADIOTELEPHONES

2 x ICOM IC-M37 VHF DSC

SSB RADIOTELEPHONE

1 x Sperry HC4500 MF/HF DSC

WATCHKEEPING RECEIVER

WatchKeeper Net Logic

TELEPHONE EXCHANGE

Panasonic KX-T7533 PABX throughout guest and crew areas

Internal and VSAT capable

Safety & Security Equipment ■

FIRE FIGHTING

Interior protected by CWO-Semco water sprinkler system throughout

CO2 suppression system in engine room

CO2 suppression system in galley range hood

ALARMS

Autronica BS100 alarm panel Smoke and heat sensors throughout



Navigation Equipment ■

SATCOM

Litton Marine Systems SAT-C transceiver
VSAT antenna for Voice and HSD

VHF RADIOTELEPHONES

2 x ICOM IC-M37 VHF DSC

SSB RADIOTELEPHONE

1 x Sperry HC4500 MF/HF DSC

WATCHKEEPING RECEIVER

Panasonic doorbell with Intercom

TELEPHONE EXCHANGE

Panasonic KX-T7533 PABX
throughout guest and crew areas
Internal and VSAT capable



Deck Equipment ■

ANCHOR WINDLASS

Steel

2 Cable gypsies & 2 warping drums

2 Directional, 2 Speed

AFT WARPING CAPSTANS

Steel

2 Directional, 2 Speed

GROUND TACKLE

7 x shackles

2 x POOL TW fully balanced stockless
super high holding power anchors, 1000kg each

BOAT CRANE & DAVITS

Gilbert & Schmalriede GMBH

1 x 2000kg SWL independent tender davits

1 x 2000kg SWL SOLAS approved rescue boat crane with
emergency battery powerpacks

PASSERELLE

Aljo - Hydraulic

6,5m, fully adjustable, teak overlay

SEARCHLIGHT

RCL 600A remote operated Searchlight



NEW AUDIO/VISUAL ■ Entertainment System

Features a centralized automation control system through RTI Remote Control automation system and dedicated RTI Remote Control handhelds to control every individual zone/space.

The Yacht is equipped with a centralized movie and music server for streaming independently in every independent space (to the interior) as well as SAT system capable of monitoring two different Satellites simultaneously.

The amplification in the interiors is facilitated through state-of-the-art Integra AV receivers connected with B&W speakers offering Hi End sound.

Upper and Main Saloon are equipped with 5.1 multichannel cinema System with B&W speakers and subwoofer. The areas supports Movies and Music Streaming as well Satellite TV.

The Master Suite is equipped with 5.1 multichannel cinema System with JBL speakers and subwoofer. The areas support Movies and Music Streaming as well Satellite TV.



NEW AUDIO/VISUAL ■ Entertainment System

The Guest Suites are equipped with cinema system supporting Movies and Music Streaming as well Satellite TV.

The exterior decks are equipped with KLIPSH Audio tuned Speakers and integrated with Sonos System which, besides the superior sound quality, offers wireless streaming from smart phones.

Server with 2,000 movies/series titles.

Each internal and external area now is equipped with Airplay devices, available from all platforms (IOS-ANDROID)



Domestic Equipment ■

MAIN GALLEY

2x Upright Alpeninos fridges 1x Upright freezer
1x Hoshazaki icemaker Waste bin
1x Küppersbusch oven
Küppersbusch 6 burner stove (4 vitro, 2 x induction)
North infrared grill, griddle, salamander & deep fryer
1 x stainless steel deep sinks inboard
Miele dishwasher

LAUNDRY

2 x Miele pro washers
2 x Miele pro dryers
1 x Miele roller press iron
1 x Tefal steam iron system
1 x stainless steel sink

LOWER DECK

2 x custom 'walk-in' refrigerators
1 x custom 'walk-in' freezer
1 x Walk in Garbage store
2 x Liebherr wine coolers



Fitness & Health ■

GYM EQUIPMENT

- 1 x Treadmill
- 1 x Exercise Bike
- 1 x Rowing Machine
- 1 x Bench
- 1 x Abdominal Fitness Device
- 7 x Dumbbells
- 1 x Yoga Mat



Tenders & Water Toys ■

1 x 8.70m SCORPION Tender with Yanmar diesel OUTBOARD engine 300hp

1 x SOLAS rescue boat with YAMAHA 30hp diesel in-board engine

1 x Jet Ski two seater SEADOO GTX

1 x Jet Ski two seater SEADOO Spark

2 x Seabob Cayago F7

Jetsurf GP100

4 x Tubes

2 x Canoe

2 x SUP

Banana

Wakeboard

Water skis

Scuba Diving Equipment

Snorkeling & Fishing Equipment

Disclaimer

The Company offers the details of this vessel in good faith but cannot guarantee or warrant the accuracy of this information nor warrant the condition of the vessel. A buyer should instruct his agents, or his surveyors, to investigate such details as the buyer desires validated. This vessel is offered subject to prior sale, price change or withdrawal without notice.

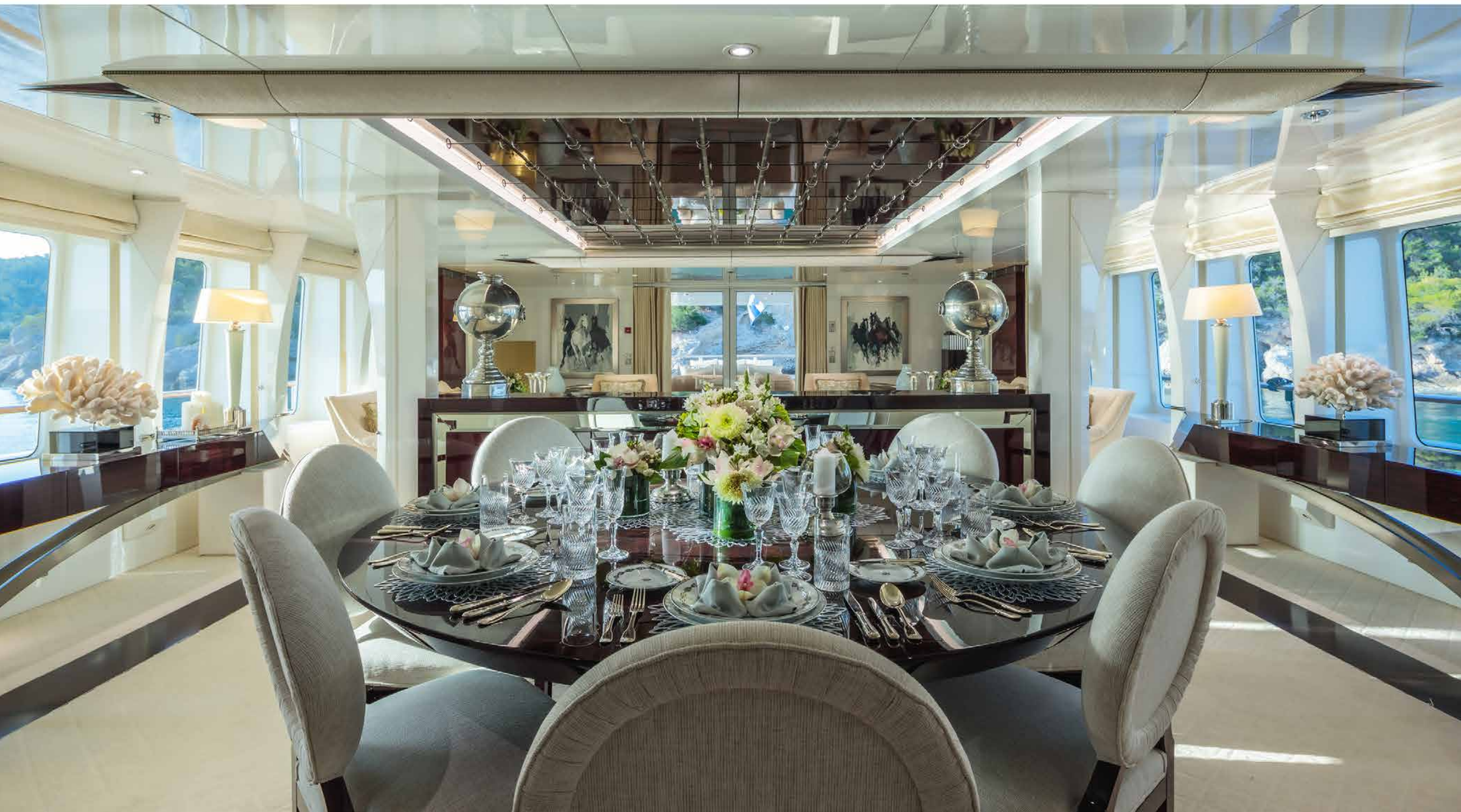








dining area





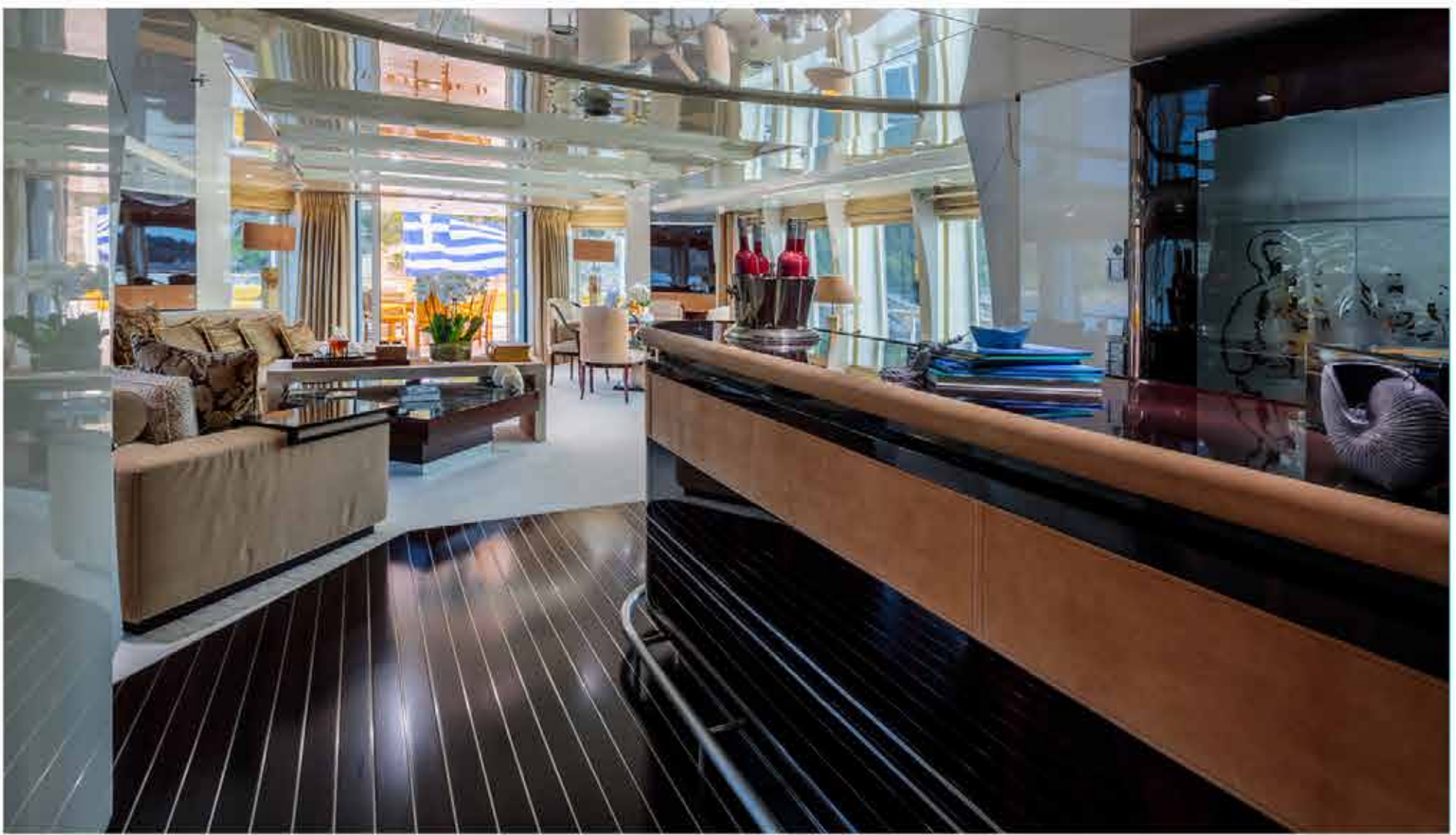
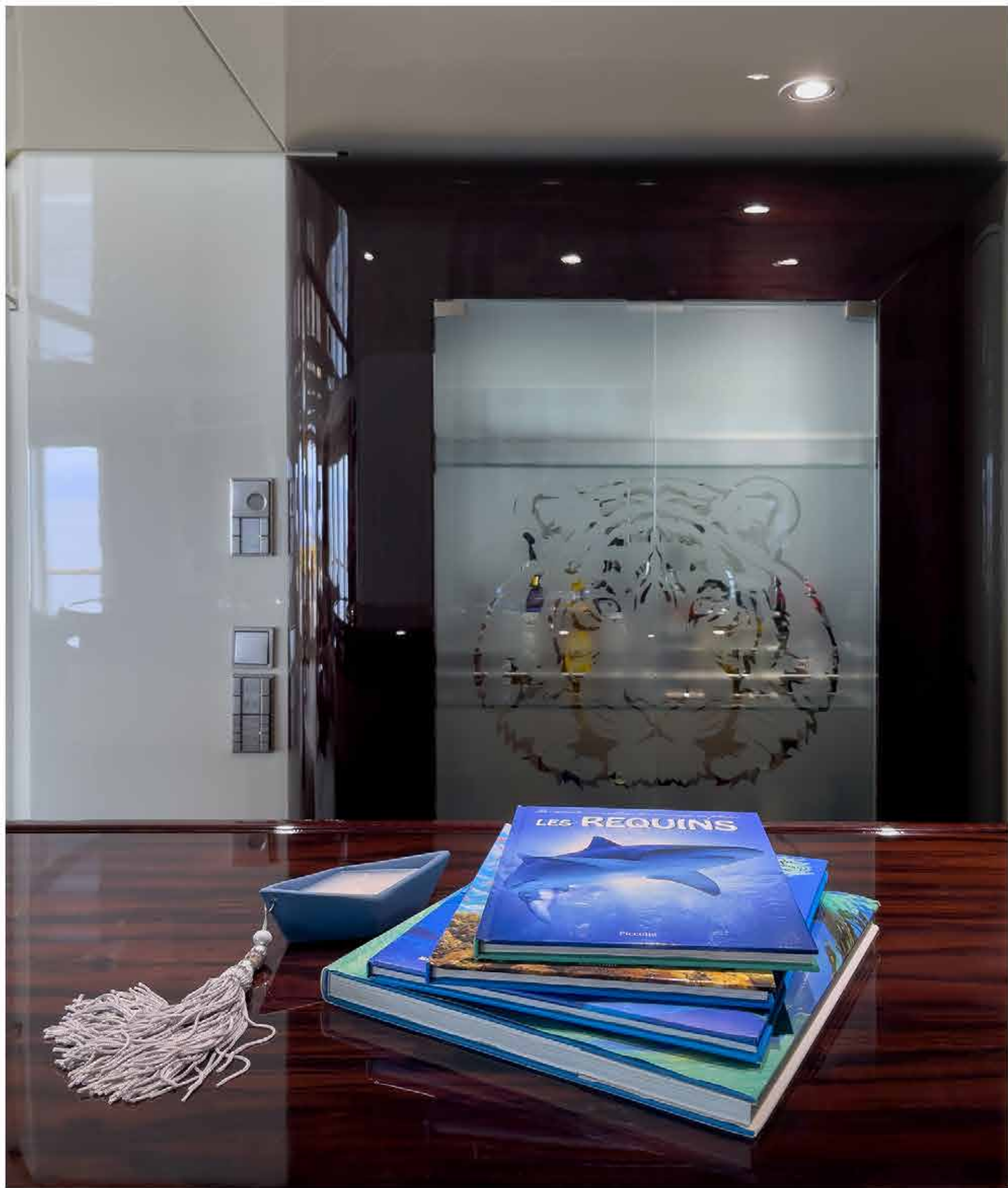


upper salon

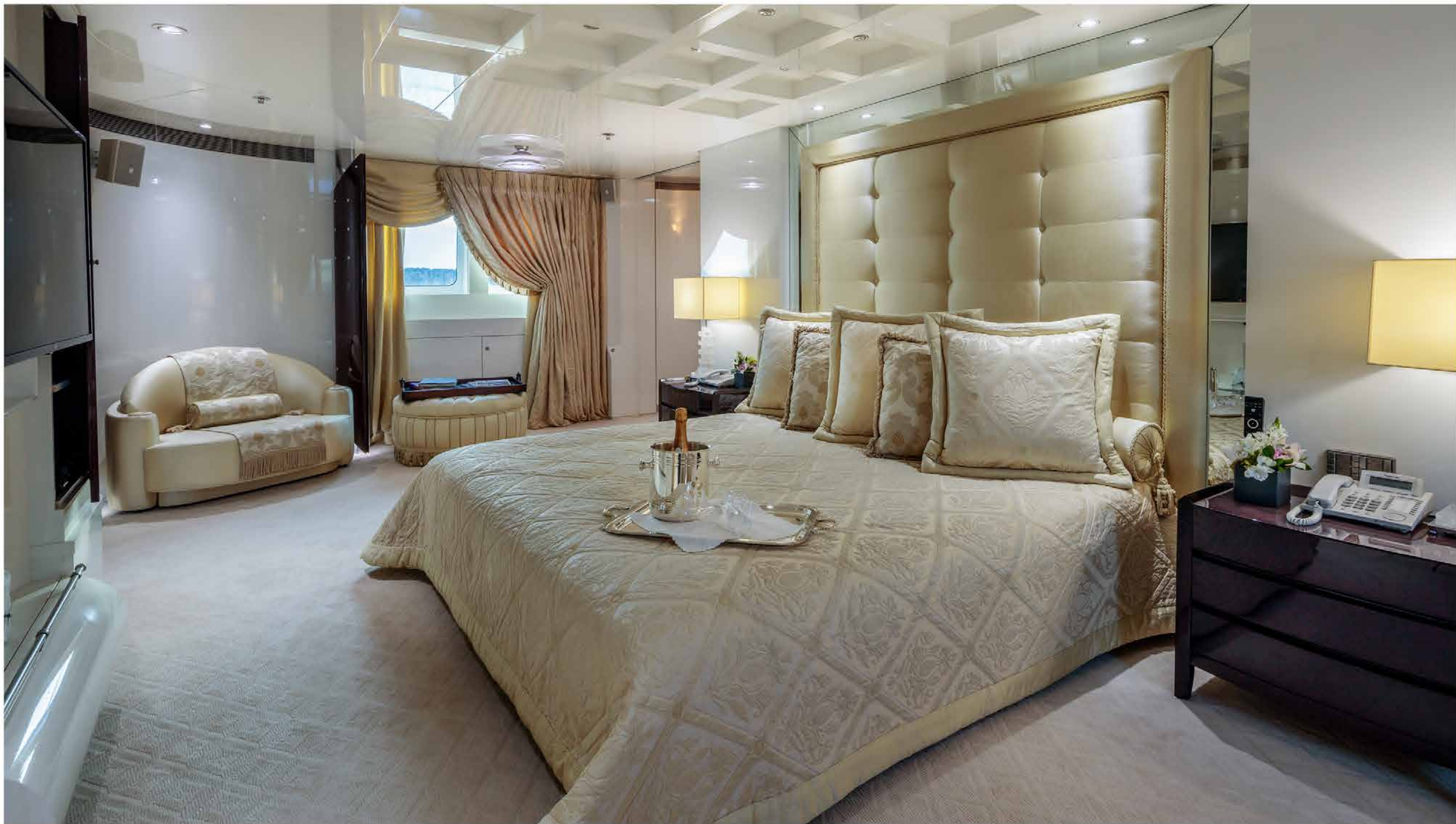








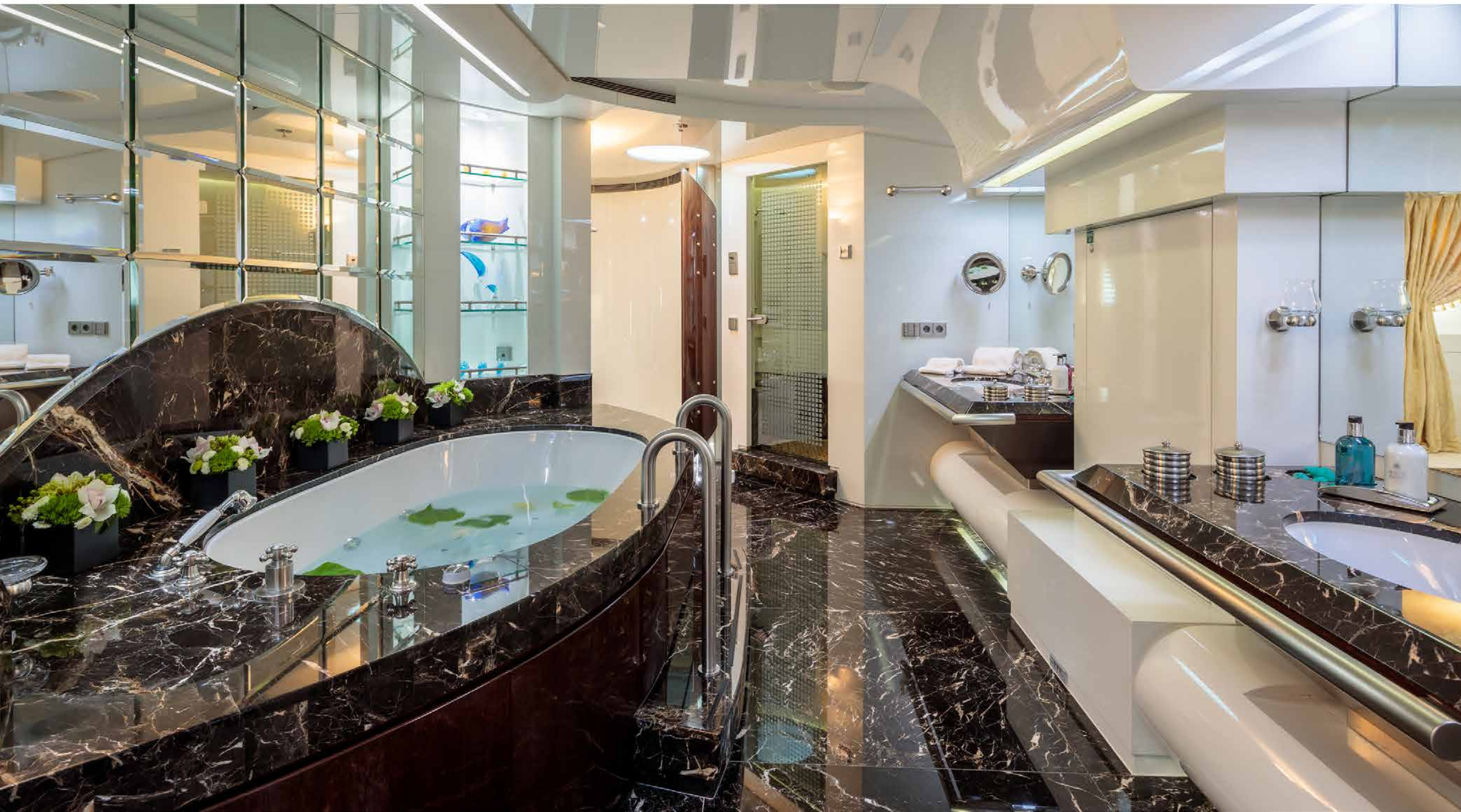


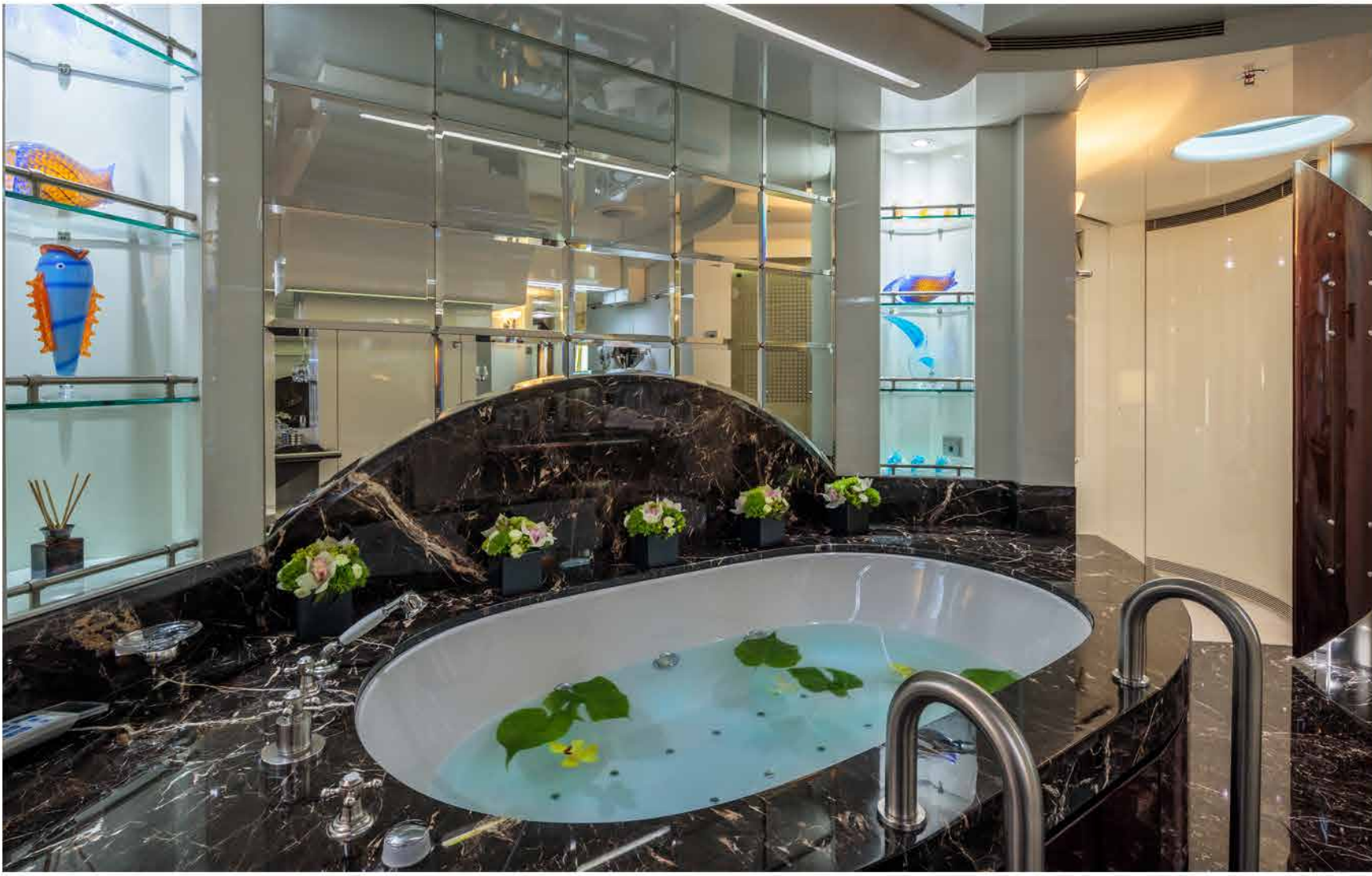
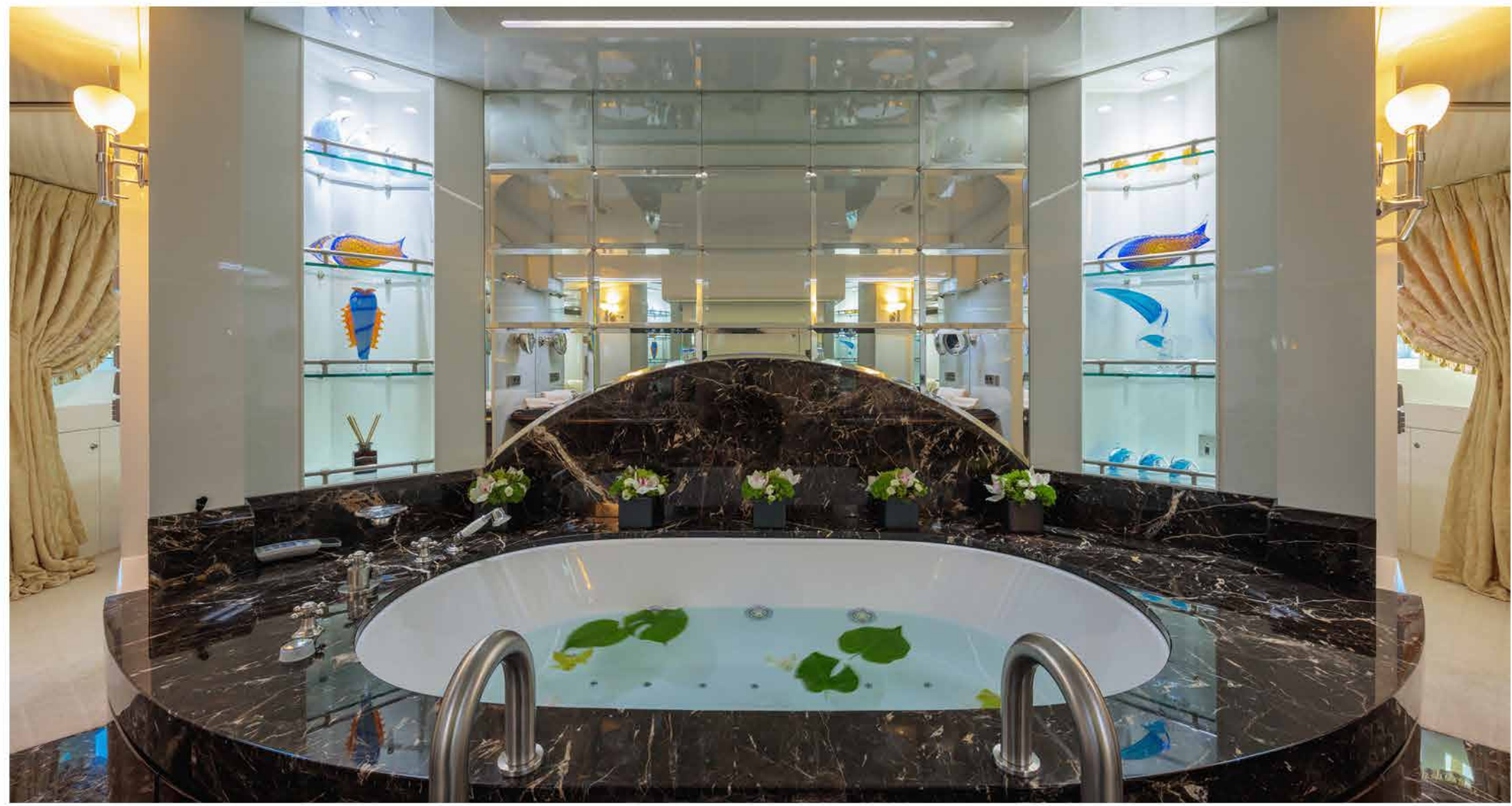






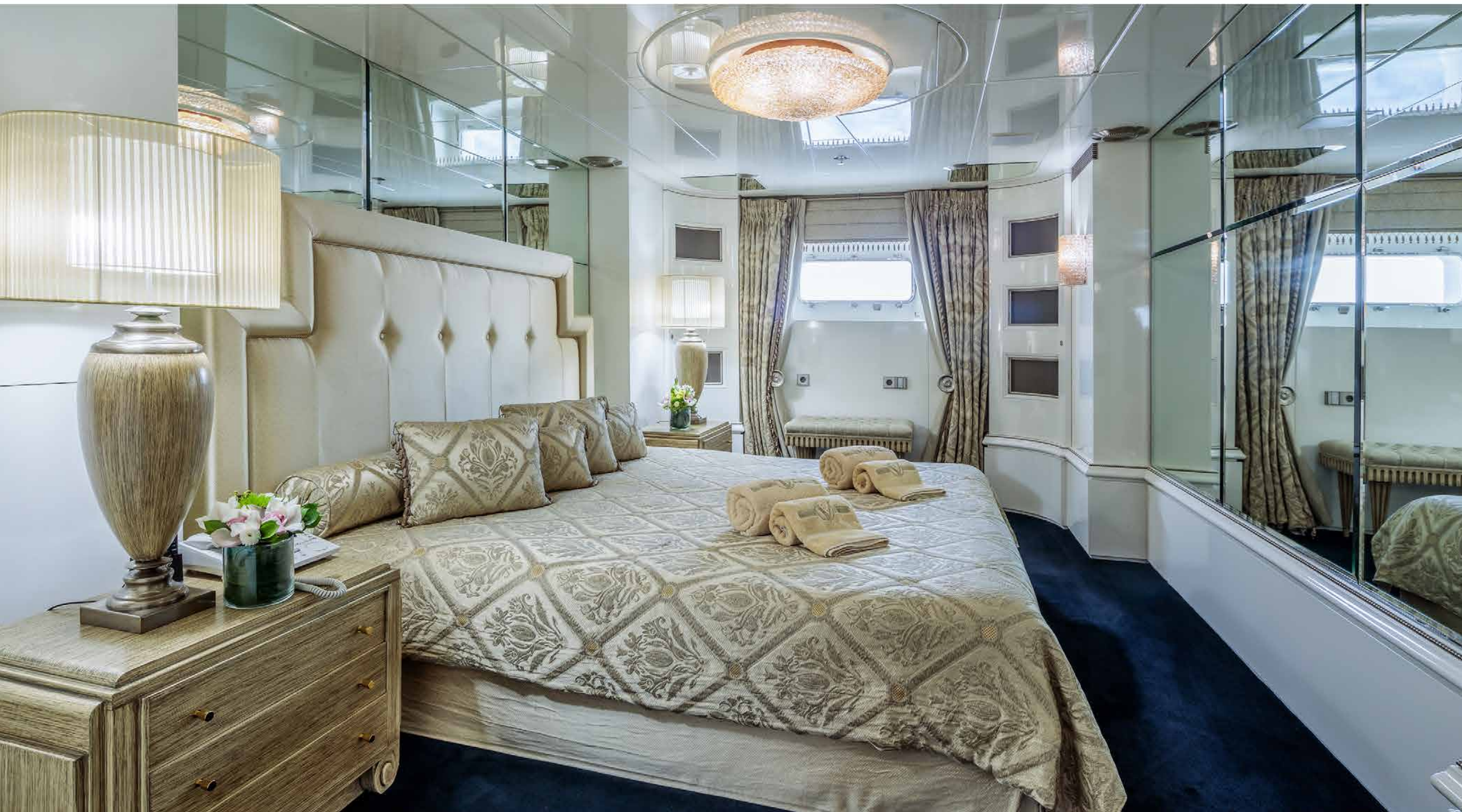
■ master cabin ensuite





■ master office







VIP cabin ensuite





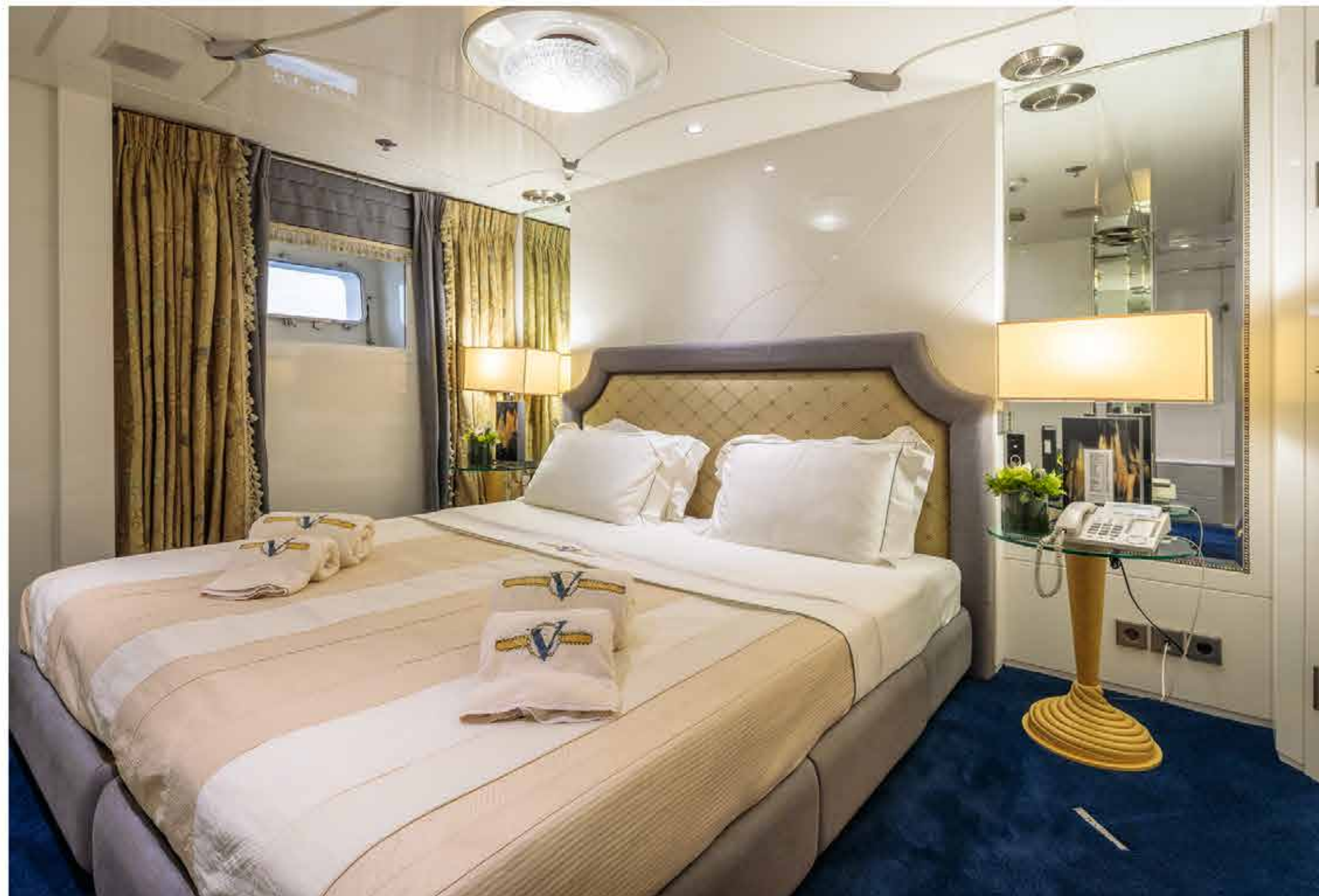


■ VIP cabin ensuite





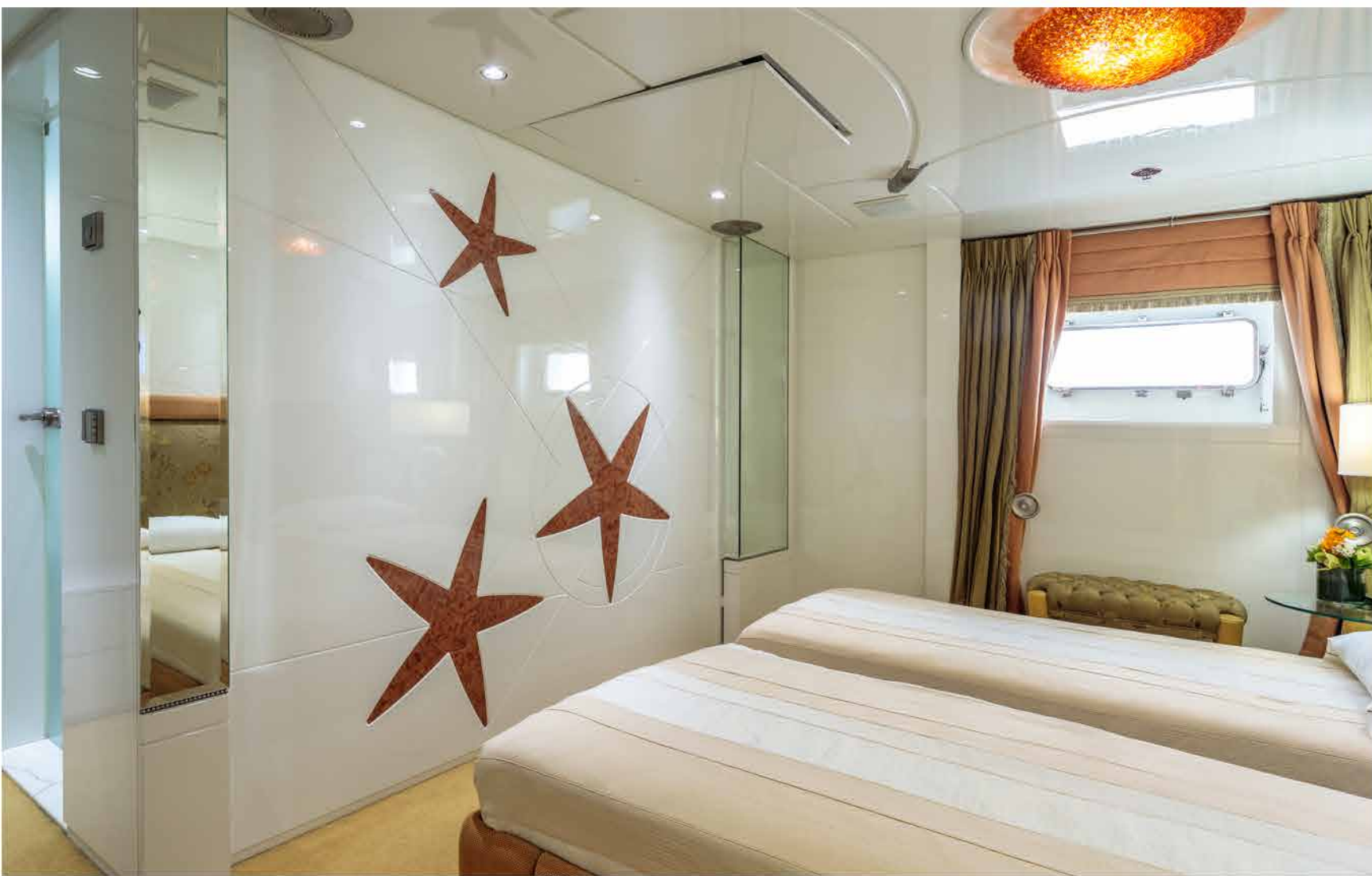
■ double cabin convertible to twin



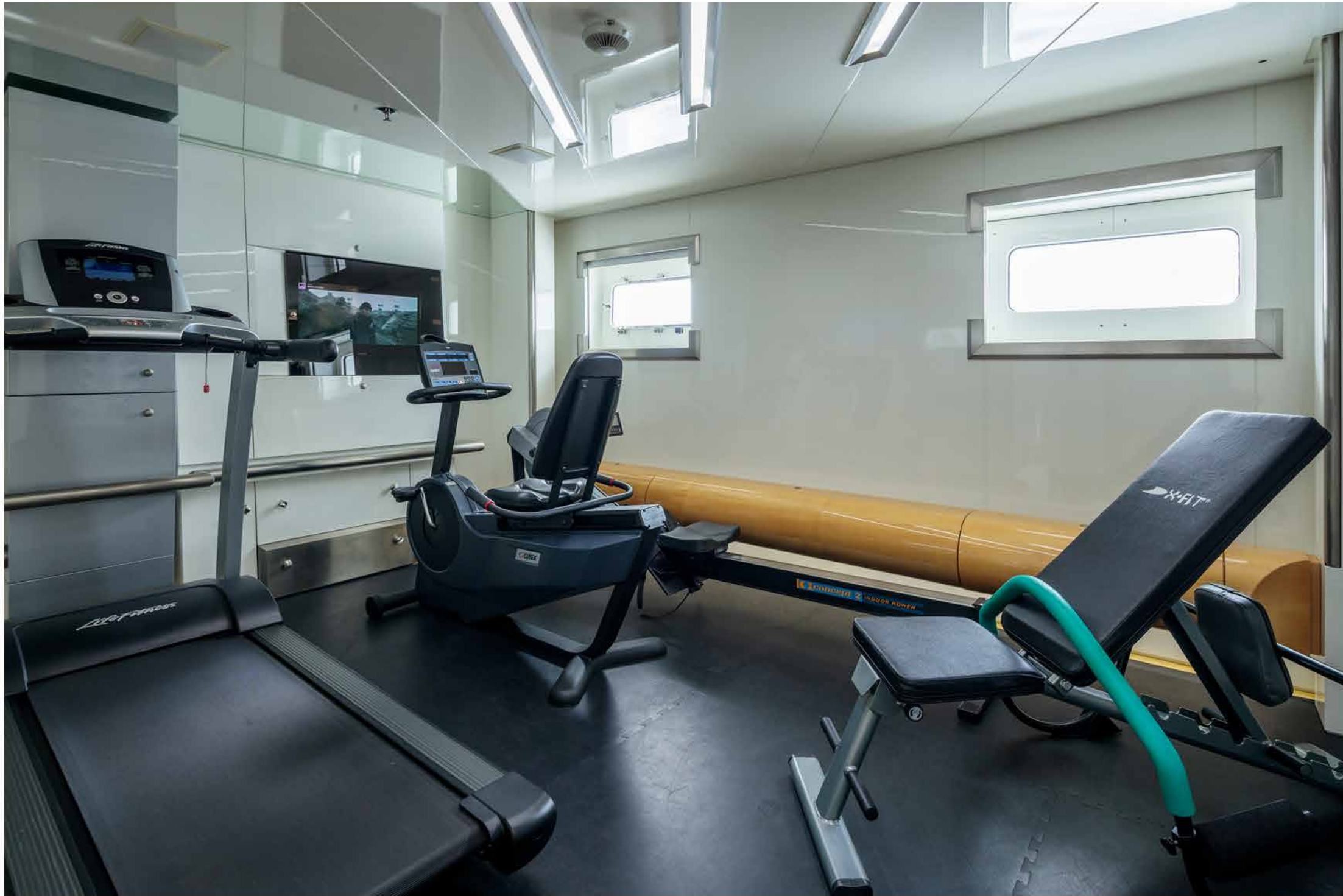
■ double cabin convertible to twin



■ double cabin convertible to twin



■ the gym















■ luxury in every detail

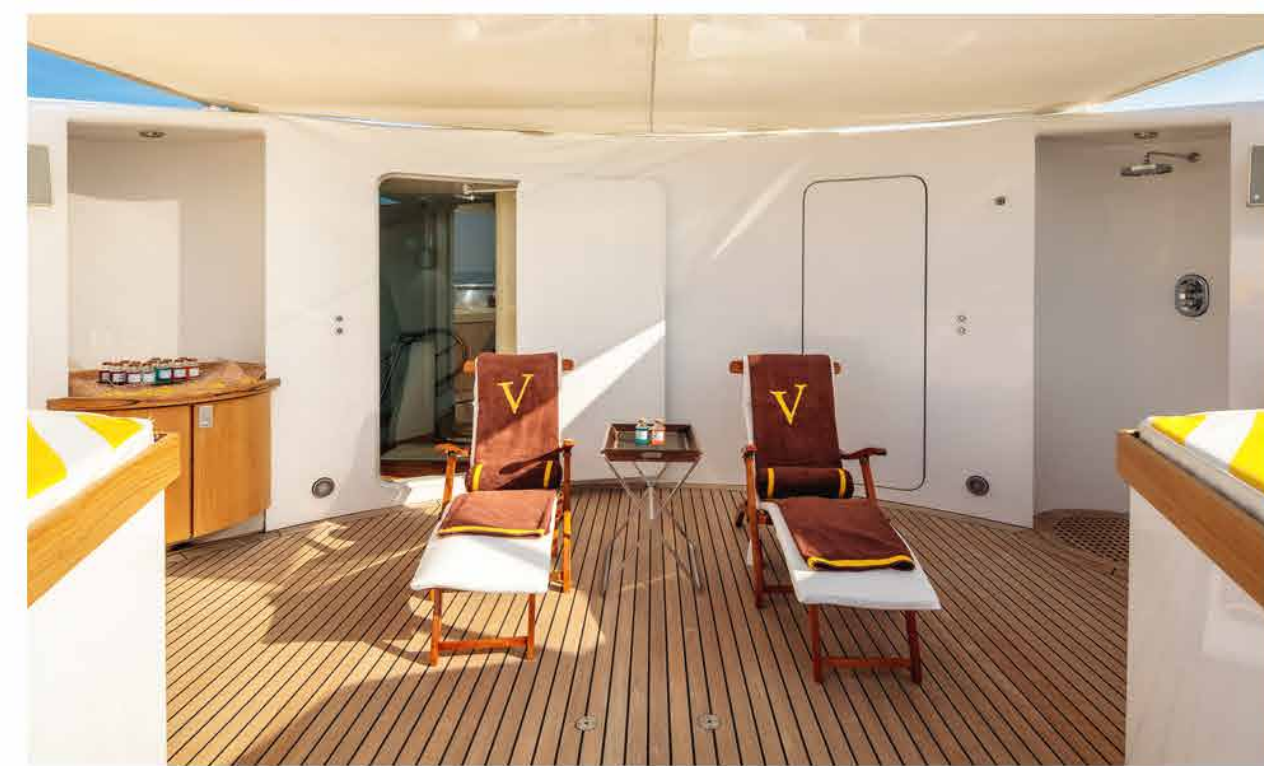










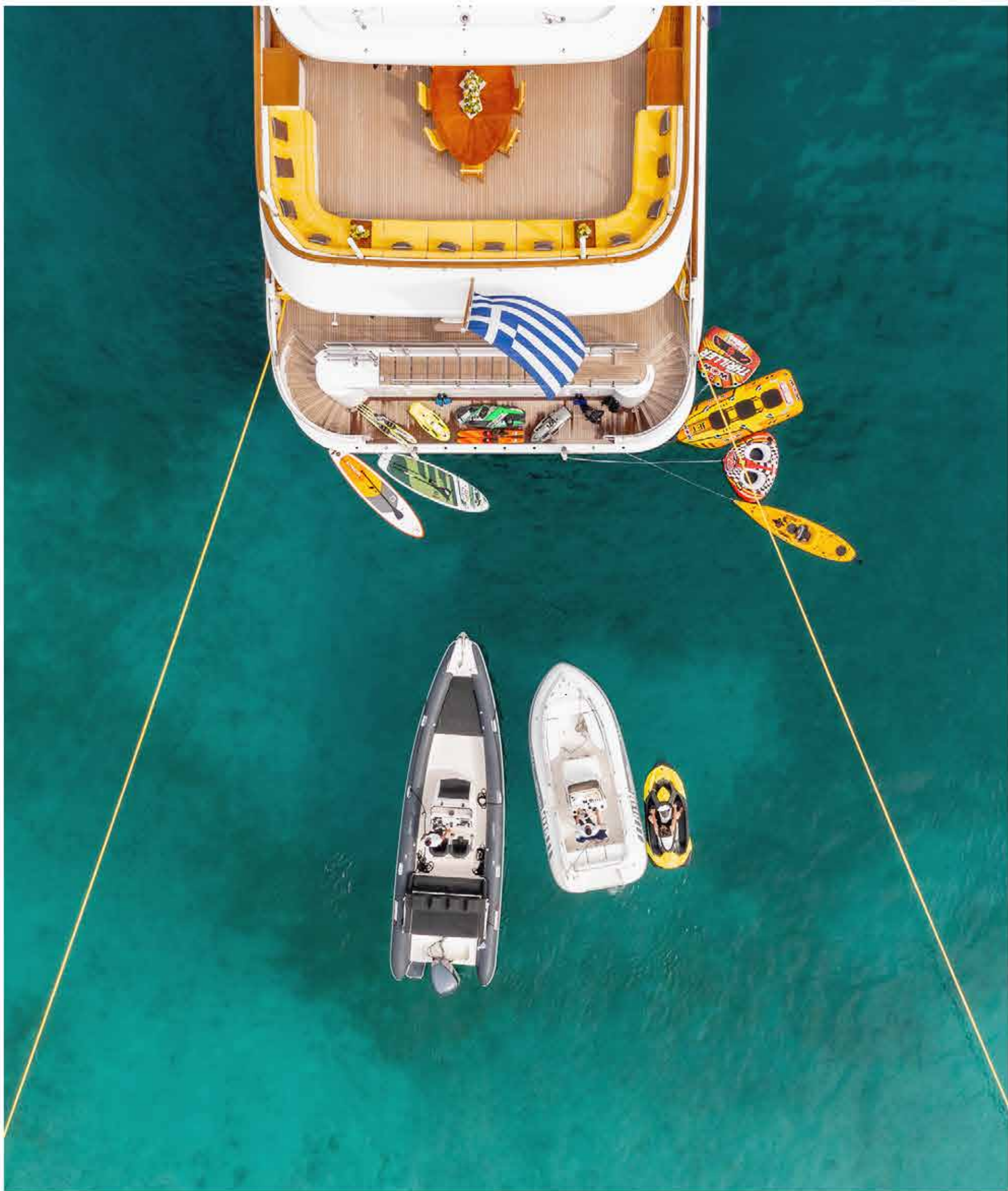






swimming platform







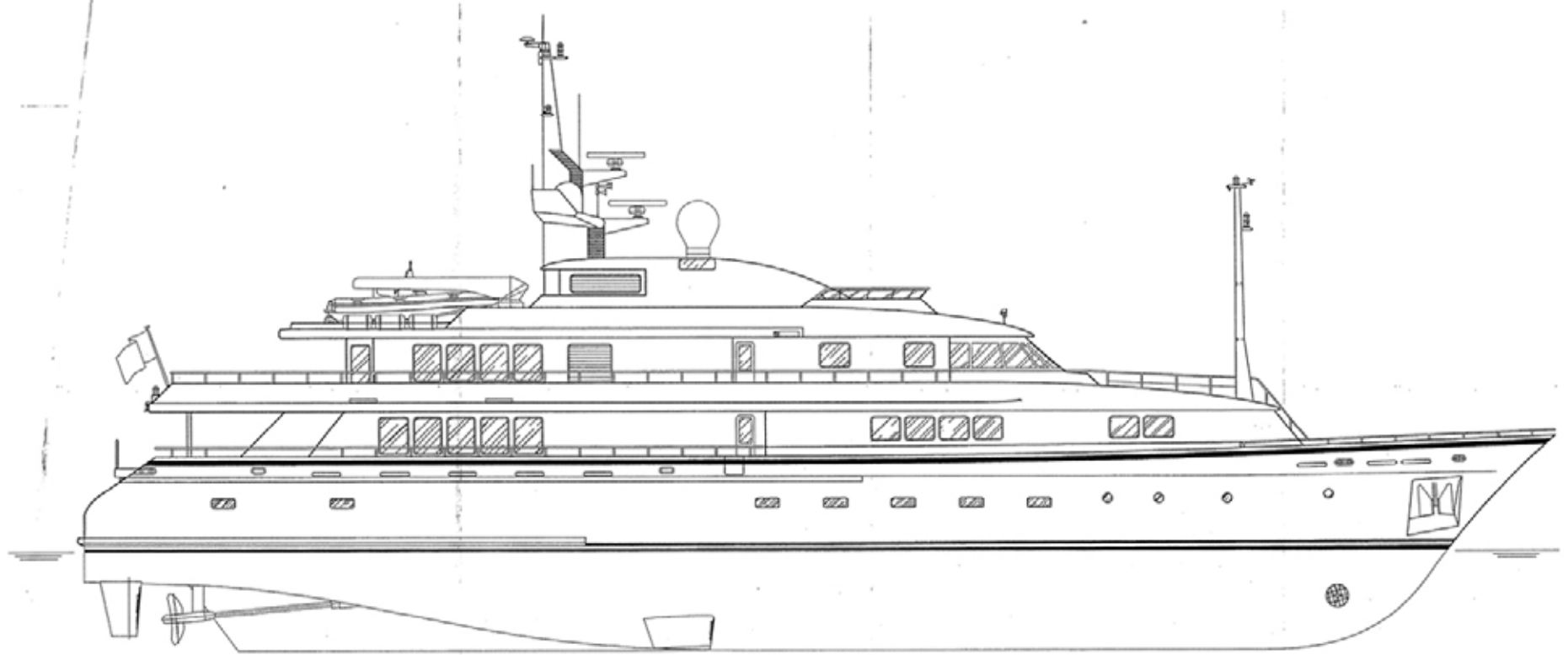




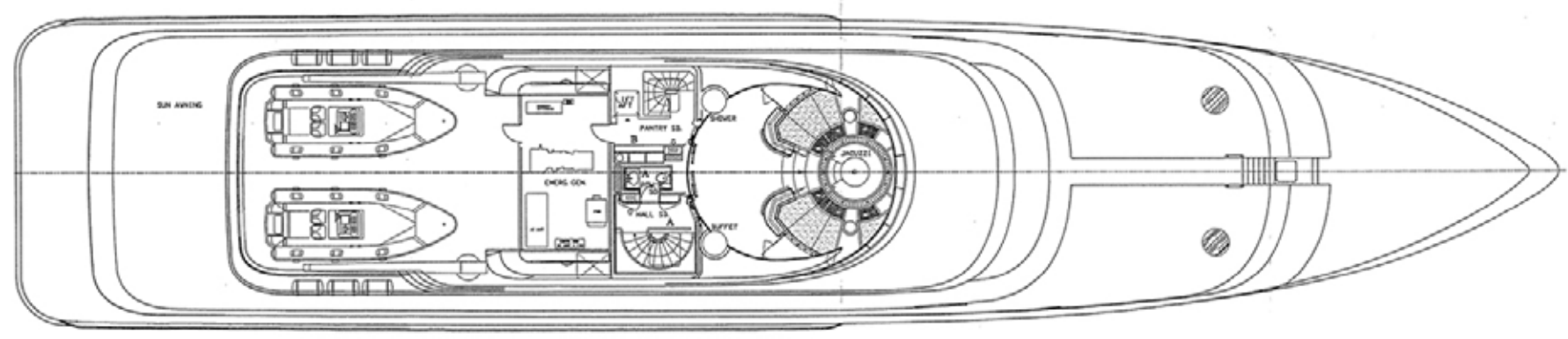
VERA



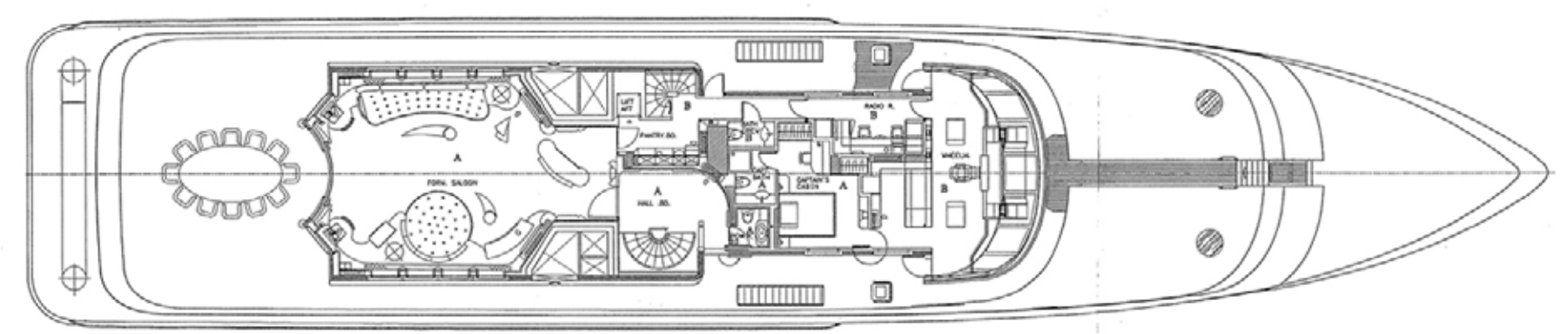




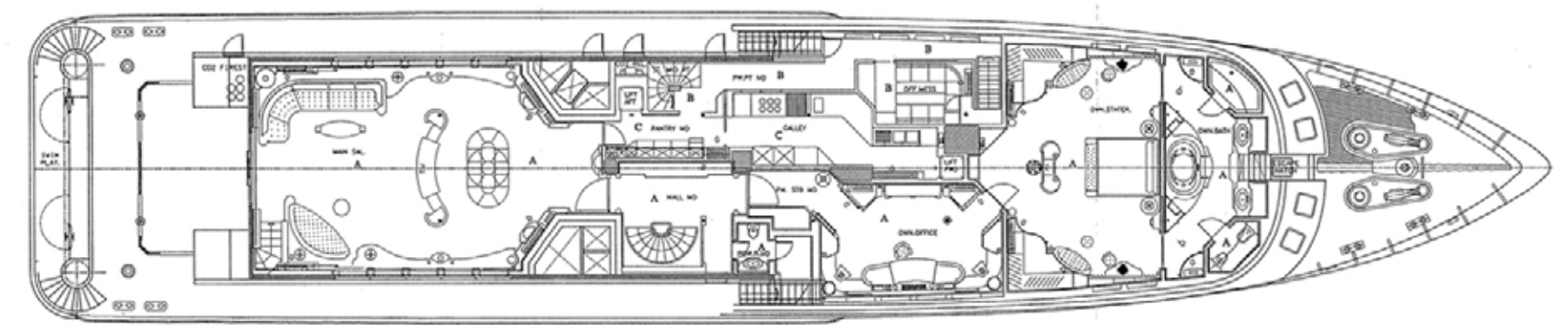
PROFILE



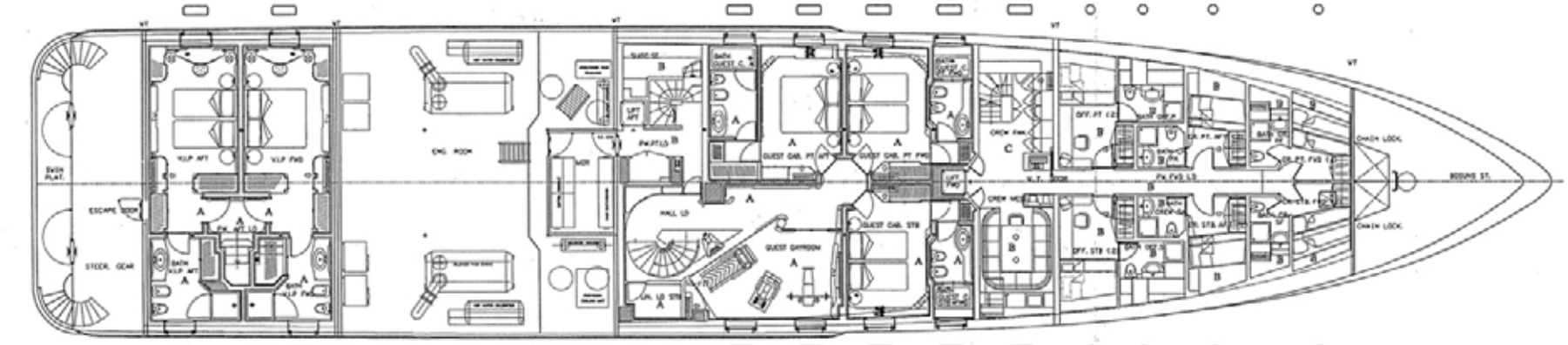
SUN DECK



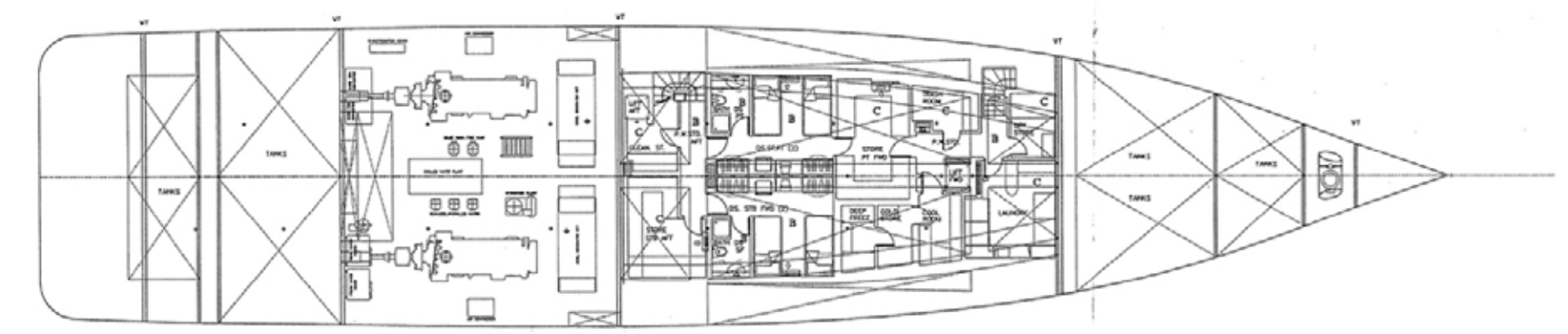
BRIDGE DECK



MAIN DECK



LOWER DECK



STAFF DECK

